

The Lake Nona Magazine

EDITION

06

THE
TECH &
INNOVATION
EDITION

*The future of
Lake Nona,
imagined by AI*



"With its innovative take on combining top level healthcare, sports, technology and other amenities with residential planning, Lake Nona is offering a futuristic vision of how people should live."

– Worth

"We're creating Innovation Hubs powered by Verizon 5G Ultra Wideband to serve as launch pads for high-impact, transformational experiences and are excited to see the new 5G use cases that will be developed in Lake Nona."
– Sampath Sowmyanarayan
chief revenue officer, Verizon Business

"How to build a great American city"
– Fortune

At the Verizon 5G Innovation Hub, innovators can test and refine 5G-powered ideas across a variety of industries including healthcare, technology, autonomous mobility, education, retail and sports.

The world's most technologically advanced Lake Nona Wave Hotel is equipped with voice-automated in-room controls, View Smart Windows, TOTO smart toilets and a custom mobile app.

"The master-planned community feels like it's equal parts proof of concept and grand social experiment. Lake Nona was able to effectively start from scratch, creating a community built around the necessities and amenities of our modern culture, economy and way of living."
– Forbes

Lake Nona Launched the region's first autonomous shuttle program with Beep Mobility Solutions (headquartered in Lake Nona), which is now the largest and longest-running single site autonomous fleet in the U.S. Since launching in 2019, the shuttles have safely carried 60,000 passengers.

In the leAD Lake Nona Sports & Health Tech Accelerator, promising early-stage tech start-ups from around the world are testing and refining their ideas.

The Lake Nona Life Project, a long-term community health study, examines the interactions between lifestyle and health.

WHIT (Wellness Home) built on Innovation and Technology) is a first-of-its-kind healthy home designed to test the latest wellbeing solutions and technologies in a real-life environment.

Cultivated a first-of-its-kind partnership between a public school and the YMCA creating a new national model where one entity provides shared resources for students.

LAKE NONA®

Planned and developed by Tavistock Development Company, Lake Nona is one of the fastest growing and most innovative communities in America. Located in Orlando, Florida, the 17-square-mile community has established a new standard of living for its residents with groundbreaking initiatives around technology, mobility, wellbeing and training.

Located contiguous to Orlando International Airport, Lake Nona's advanced infrastructure and commitment to collaboration has drawn companies and entrepreneurs from across the globe to join its living lab environment accelerating economic growth across health and life sciences, education, hospitality, and sports and performance.

Lake Nona's business ecosystem is enhanced by a cultural landscape defined by iconic architecture and public art installations, miles of trails and walkable green spaces, signature events, shopping, dining and entertainment options set amongst Central Florida's beautiful natural landscape and year-round sunshine.

PLAY STAY STUDY SUSTAINABILITY WELLBEING LIVE WORK



- 06 • What's Happening
- 07 • Actually, Factually: Lake Nona Facts
- 09 • Stay the Lake Nona Way
- 10 • Lake Nona Wave Hotel
- 12 • Kids at Play
- 14 • Lake Nona Performance Club
- 16 • Sports Lover's Guide
- 18 • Lake Nona Art Tour
- 20 • Art & Tech Collide
- 24 • Teaching Young Innovators
- 26 • Re-Wilding of Lake Nona
- 28 • Advancing Healthcare in Your Backyard
- 30 • Happy & Healthy Year-Round
- 33 • Lake Nona's Neighborhoods
- 46 • WHIT: The Home of The Future
- 48 • Built Better for Business
- 50 • All Routes Lead to Lake Nona
- 52 • Reach for the Stars
- 54 • MS² Innovation Space
- 56 • Shaping Tomorrow's Future Today

EDITION 06 THE TECH & INNOVATION EDITION

Event Highlights LN.

What's Happening 2024

Hosted at:
LAKE NONA
TOWN CENTER
unless otherwise noted

There's always something fun to do in Lake Nona!

Gather with your neighbors, build community and have a blast at these events taking place throughout the year.

FEB

24 SAT
Carnaval

MAR

09 SAT She Village
24 SUN Tour de Cure

MAY

18 SAT Run Nona
11 SAT Lake Nona's Day of Wellness

JUN

01 SAT Pineapple Festival
29 SAT Great American Block Party

SEP

28 SAT Oktoberfest

OCT

26 SAT Graveyard Smash

NOV

11 MON Veterans Day

DEC

06-22 Oh, What Fun! Holiday Festival

For more information on what's happening in Lake Nona, visit LakeNona.com or follow along on Facebook and Instagram @learnlakenona for the latest live entertainment updates.

RECURRING EVENTS

Lake Nona Town Center

ART AFTER DARK
Fridays

LIVE ON THE LAWN
Saturdays

Laureate Park Village Center

FARMERS MARKET
First Wednesday of the Month

Dockside Lake Nona
SUNLIGHT YOGA
Mondays, Wednesdays, Fridays

MORNING MEDITATION
Wednesdays

CRAFT WORKSHOPS
Quarterly

SIGNATURE EVENTS
Quarterly

Crescent Park
CRESCENT CINEMA
Various Dates

YAPPY HOUR
Various Dates

YOGA NONA
Saturdays



Scan to Learn More

Dates and times subject to change

actually, FACTUALLY: LAKE NONA FACTS

1000+ COMMUNITY EVENTS EACH YEAR

THE LAKE NONA LIFE PROJECT
GROUNDBREAKING MULTI-YEAR HEALTH STUDY
LIVETOPARTICIPATE.COM

TOP-SELLING MASTER-PLANNED COMMUNITY IN CENTRAL FLORIDA

20 MINUTES AWAY FROM DOWNTOWN ORLANDO

FROM PRE-K TO PH.D./M.D. ALL WITHIN LAKE NONA

44 MILES OF TRAILS



86% OF RESIDENTS HAVE COMPLETED A BACHELOR'S DEGREE

HOME TO USTA NATIONAL CAMPUS

40 MINUTES TO BEACHES

17 SQUARE MILES

MILLIONS OF SQUARE FEET OF RETAIL, OFFICE AND COMMERCIAL DEVELOPMENT

HOME TO LAKE NONA WAVE HOTEL, THE WORLD'S MOST TECHNOLOGICALLY ADVANCED HOTEL



HOME TO THE COUNTRY'S LARGEST AND LONGEST-RUNNING SINGLE-SITE



AUTONOMOUS SHUTTLE FLEET

CISCO'S FIRST ICONIC SMART + CONNECTED CITY IN THE U.S.

54% OF RESIDENTS GET AT LEAST 7,500 STEPS PER DAY

DESIGNED AND BUILT FROM SCRATCH AND ANCHORED BY CLUSTERS OF EXCELLENCE IN WELLBEING, SPORTS AND PERFORMANCE, EDUCATION AND TECHNOLOGY

LOCATED CONTIGUOUS TO ORLANDO INTERNATIONAL AIRPORT



CANVAS

RESTAURANT & MARKET

The Canvas Restaurant menu features new American cuisine influenced by Florida's Southern and Latin American roots. The menu focuses on seasonal and regional produce as well as an abundance of fresh, Florida seafood.



ACCOLADES



STAY THE LAKE NONA WAY

Whether you're traveling for business, escaping for a quick staycation or visiting the area as a gateway to Orlando's theme-park paradise, Lake Nona's hotels have it all, no matter what brings you to Central Florida.

Wave Hotel	Aloft Hotel	SpringHill Suites	Courtyard	Residence Inn
<p>Its striking silhouette against the blue Lake Nona skies communicates one thing: This is no ordinary hotel. The Wave Hotel seamlessly combines technology, art and wellbeing. Take a stroll in the world-class sculpture garden, enjoy innovative dishes and cocktails at three on-site dining locations, or soak up some rays on a poolside lounger.</p> <p>LakeNonaWaveHotel.com</p>	<p>Arguably the hippest hotel in the Marriott Bonvoy hotel portfolio, the Aloft Hotel Lake Nona opened in December 2023 and features 205 loft-inspired guest rooms with a lobby bar and concert space, where guests can enjoy live music and libations nightly.</p> <p>AloftLakeNona.com</p>	<p>Located within Lake Nona Creekside, the SpringHill Suites by Marriott features 153 suites just a few minutes from Orlando International Airport and Lake Nona Town Center. The outdoor pool, fitness center and grab-and-go market make the hotel a one-stop destination for anything the business or leisure traveler might need.</p> <p>Marriott.com</p>	<p>Experience a rejuvenating stay at Courtyard by Marriott, ideally situated in the heart of Lake Nona Town Center's dining and entertainment district. The hotel offers a variety of modern amenities including Stay Well™ accommodations. Whether visiting for business or leisure, enjoy a memorable stay in Lake Nona, Orlando.</p> <p>Marriott.com</p>	<p>Residence Inn by Marriott offers spacious, apartment-style suites with full kitchens, making it an ideal choice for extended stays. The hotel boasts a premier location near the USTA National Campus and convenient access to Orlando's top attractions and airport, along with a variety of complimentary amenities.</p> <p>Marriott.com</p>



L A K E N O N A
W A V E
H O T E L

THE WAVE OF THE FUTURE

at the most technologically advanced hotel in the world



How Lake Nona Wave Hotel became the world's most tech-forward hotel.

AI-powered beds. A self-driving shuttle. Climate-smart skincare. As much as these sound like things straight out of "The Jetsons," they're actually all right here at Lake Nona Wave Hotel.

The stylish destination effortlessly blends hospitality and innovation — making it a one-of-a-kind stay in the lap of high-tech luxury. In fact, it's been dubbed the most technologically advanced hotel, not just in the US, but in the world. That's right—17 stories of high-tech amenities are just around the corner.

Some of the enhancements you'll find are head turners (temperature adjusting beds) and others are simply mesmerizing, like the kinetic chandelier that undulates over the reception desk. All of the tech-forward features help to power a seamlessly connected guest experience so you can focus on the main thing: enjoying yourself.

Let's take a closer look at what a tech-savvy stay at the Wave Hotel is all about.

Keyless Convenience

The first tech touch point is the Wave Hotel app. This custom app has everything you might need before, during and after your stay. By using the app, guests can skip the welcome desk, check-in from their phone and head directly to their room, which can be unlocked with a digital room key. Guests can also use the app to order room service, make dining reservations, discover upcoming events, view jogging trails and fitness class schedules, chat with the front desk and even set their room temperature before they arrive.

Connected Comfort

Comfort is king during any hotel stay, so it's no wonder that each of the Wave Hotel's 234 guest rooms is outfitted with innovative details designed to make your stay as enjoyable as possible.

This starts with the floor-to-ceiling windows that show off Lake Nona's spectacular sunsets. But these aren't just any windows — they're made of AI-powered View Smart Windows that automatically adapt the glass tint throughout the day, maximizing natural light and minimizing heat and glare. Not only does this mean brighter days, but also a better night — the windows actually enhance sleep by promoting the qualities of light that boost circadian alignment. When you wake up, fully rested, a Nespresso coffee maker in each room awaits to make your morning even more delightful.

Complimentary high-speed Wi-Fi 6 lets guests easily stay connected or stream their favorite shows on the room's 65-inch HD Smart TV. And in every bathroom, you'll find a TOTO Neorest automatic, self-cleaning toilet – complete with a heated seat and an auto open/close lid.

Need to adjust the temperature, close the drapes or dim the lights? Just tell the room what you'd like — voice-enabled controls will do the rest. Or you can use your app or in-room tablet to make any adjustments, control your TV, request forgotten items and instantly chat with the welcome desk team.

Wellness Wonders

While every room is impressive, it's the collection of six Well+tech rooms where you'll really get a glimpse of the hotel room of the future. These wow-factor rooms are regularly updated with cutting-edge innovations in hospitality and wellness.

Each room features a Bryte Balance™ Smart Bed that actively puts you to sleep and helps you wake more rested. Guests can control the bed's firmness and temperature, and they can even set an alarm on the bed that gently rocks them awake in the morning. Every bed is furnished with Nollapelli linens that use textile technology engineered for better skin, hair and rest. Talk about beauty sleep.

The Well+tech rooms also include sleep accessories like an acupuncture mat for pre-sleep relaxation, a sound machine, and a pillow insert that automatically adjusts to reduce snoring, all by SleepScore Labs.

In addition to the magic mattresses that help guests feel refreshed and ready to go, the rooms utilize UV-air filtration systems to provide the cleanest air possible and LED circadian lighting solutions designed to improve sleep, mood and your overall sense of wellbeing.

Guests can also treat themselves to a collection of Pour Moi climate-smart skincare, including Tropical Day Cream uniquely designed for Florida's hot and humid weather. And speaking of the heat, each Well+tech room comes stocked with MAD TASTY, a refreshing CBD-infused beverage to hydrate the body and clear the mind.

Dynamic Details

The technology at Wave Hotel isn't just limited to the rooms. The hotel and its amenities include high-tech details at every turn.

Then there's the hotel's fitness center loaded with the very latest Technogym® equipment. Here for a meeting? You'll find state-of-the-art spaces with smart-screen technology for presentations and FaceTime connectivity. And the Lake Nona Sculpture Garden, directly adjacent to the hotel, features a world-class art collection with the likes of Fernando Botero, Arturo di Modica and Henry Moore to name drop a few. Visitors can explore and enjoy a self-guided art tour via QR codes at each piece.

And there are more than a few futuristic ways to get around, including the complimentary autonomous Beep shuttle service and the electric-powered vehicles that guests can use to explore the area. Plus, there are plenty of complimentary EV-charging stations in the Wave Garage if you came by way of your own electric vehicle. Speaking of the Wave Garage, you'll want to check out its striking exterior artwork designed by Lake Nona artist, JEFRE, which celebrates the language of braille with circle cutouts of varying sizes and pops of LED accents that transform the building into a kaleidoscope of color after the sun sets.

Earning the status of the world's most technologically advanced hotel is no small feat. And with the speed at which tech is advancing, keeping the title is an even taller order. But it's a challenge gladly embraced. Wave Hotel will continue to lead the way when it comes to innovations in hospitality — embracing the technology of tomorrow, not just for today, but far into the future. **LN.**



Did you Nona?

Lake Nona Wave Hotel is the **largest single-use facility of TOTO Neorest smart toilets.** These self-cleaning toilets provide an automatic open and shut lid, a heated seat, built-in bidet and conserve up to 35% of water with each flush.

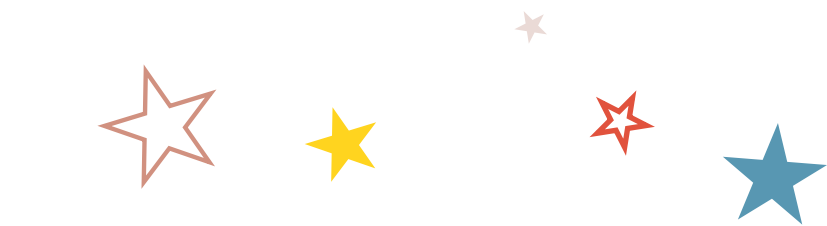
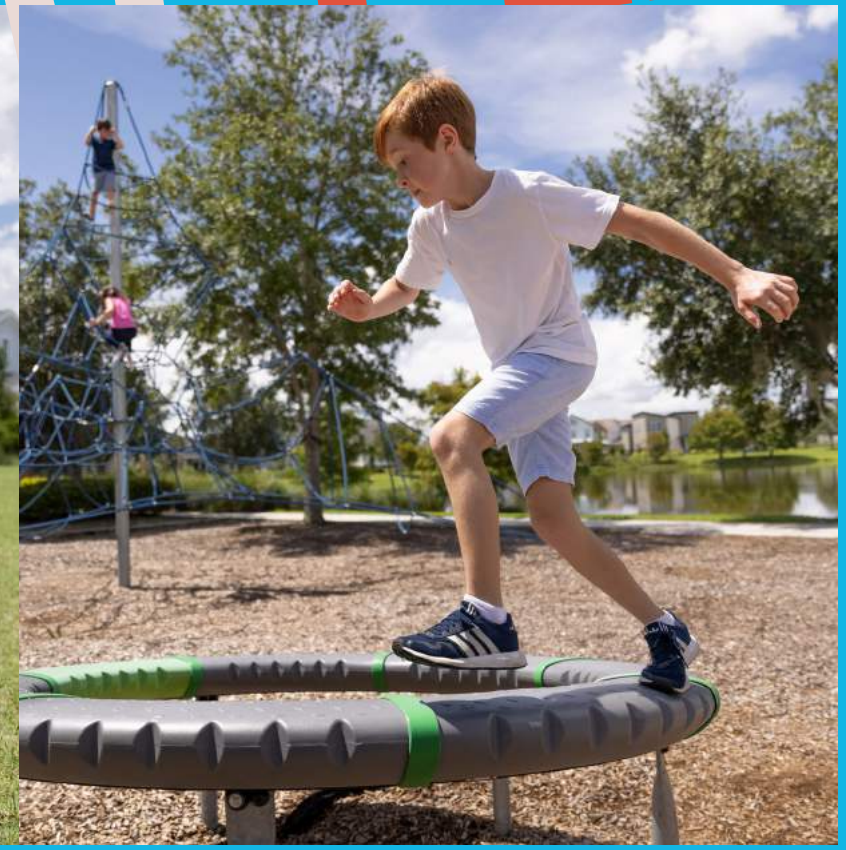


Scan to Book a Stay at:
[LAKENONAWAVEHOTEL.COM](https://www.laketonawavehotel.com)





KIDS AT PLAY



Looking for a little family-friendly adventure? In Lake Nona, you don't have to go far to find it. Here's a list that will tickle every kids' fancy — they won't even realize they're also learning and growing.

Kicking and Screaming

XL Soccer World offers programs and leagues for little Ronaldo's and Messi's of all ages, from programs for toddlers as young as 18 months to recreational and competitive leagues for ages 6 to 14. They also offer a fantastic program specifically designed for kids with special needs and an all-girls program with a Girls Director of Coaching, Olympic Gold Medalist and World Cup Champion Sydney Leroux.

XL Soccer World has recently expanded its facility to include two full-size outdoor fields which play host to international youth tournaments, adult leagues, recreational programs and is home to the Orlando City Soccer School.

Hit the Sand with Olympic Champions

In 2020, pro beach volleyball players and Lake Nona residents, Phil and Jennifer Dalhausser, launched the Phil Dalhausser Beach Volleyball Academy at Boxi Park. The classes are designed for kids and teens of all skill levels (plus there are adult social leagues if you're looking to get your own spike on).

Blaze the Trails

With more than 44 miles of paved and unpaved trails to explore, Lake Nona is the perfect spot to hitch up the bikes and go for a ride or a nature walk. Soak in the sights and sounds from the flora and fauna around you or make a scavenger hunt for the kids to keep busy as you enjoy Florida's natural scenery.

Be the Talk of the Town Center

Lake Nona Town Center is the beating heart of the community, and it's a hub for families looking to unwind after a long day or week. Start with dinner at Park Pizza & Brewing Co., Bosphorous Turkish Cuisine or Chroma Modern Bar + Kitchen.

The green space is a perfect spot to wait for a table, snag a snap in front of the angel wings mural, or let the kids play while you lounge on one of the patio chairs and soak up the moments of sunshine. At Boxi Park, the playground, pavilion and dog run areas are a high priority for kiddos to meet and greet each other and watch their favorite pups play.

Dive into Laureate Park Aquatic Center

It's hot out there! If you're a Laureate Park resident, grab the kids, their swimsuits and towels and splash away the day at the Laureate Park Aquatic Center, which recently grew by 17,000 square feet.

There's a new pavilion for picnicking and a five-lane lap pool for your little Michael Phelps to practice his butterfly. On land, the half-sized basketball court and beach volleyball courts are perfect for playing before taking a dip.

Learn to Drive

Okay, not in a car, but in one of the bays at Drive Shack Lake Nona. Kids will love competing with each other (and you!) to see how far they can drive the ball. The climate-controlled bays make this a fun outing even in the hot summer months. Inside, kids will find a virtual reality driving range and golf course to practice in the cool of the air conditioning, as well as retro arcade games, basketball, foosball, shuffleboard and more.

Get a Taste for Adventure

Nona Adventure Park is an active kid's wonderland. With inflatable slides and obstacles, they'll feel like they're on an episode of Wipeout while they traverse the cable park, scale the 60-foot climbing tower, swing through the ropes course and more. Water-based sports are a big draw here, and little daredevils can try their balance and participate in a wakeboarding, kneeboarding or waterskiing lesson at Nona Wake.

Play the Day Away

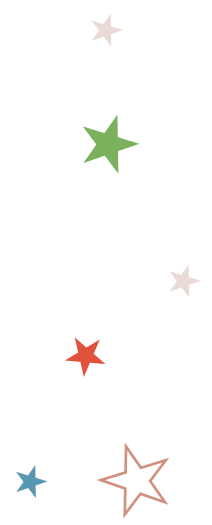
Lake Nona kids can make the most of sunny days by playing at the neighborhood playgrounds complete with slides, rope climbs, and custom features made with little ones in mind.



Scavenge for Art
Lake Nona is home to dozens of art installations that feature different art forms including sculptures, murals, digital art, and live performances.

Take the kids on a scavenger hunt to find these art installations throughout the community on the sides of buildings and parking garages, in gardens and courtyards, indoors and out.

Select pieces of art in Lake Nona have QR codes installed in front of the installations. Scan them to learn more about the artist and inspiration behind each of these unique pieces. **LN.**



Most neighborhood playgrounds are reserved for residents; however, guests and residents alike are welcome to play at our two City of Orlando Parks: McCoy Community Park: 7945 Dowden Road, Orlando, FL 32827 • Heroes Community Park: 14086 Centerline Drive, Orlando, FL 32827



Luxury locker rooms featuring towel service, sauna and steam rooms

Fresh juices, smoothies, and healthy snacks from Lake Nona's own Veg'n Out

More than 150 state-of-the-art pieces of strength and cardiovascular equipment



The region's largest rock-climbing gym featuring a 43-foot climbing wall

Indoor track for walking and jogging

Multiple indoor basketball and volleyball courts

Home to the Chopra Mind-Body Spa with Four Treatment Rooms dedicated to recovery and rejuvenation



LAKE NONA PERFORMANCE CLUB

Fitness, Redefined.

Find your Fit

LakeNonaPerformanceClub.com

A dedicated 5,500-square-foot Chopra Mind-Body Zone to rival the best yoga, barre, and Pilates studios, partnered with Deepak Chopra

15,000-square-foot EDGE Sports Performance and Recovery Room

Aquatics Center featuring four different pools



LEVEL UP YOUR HEALTH

In an era where we can turn on our kitchen lights from across town and our cars are learning to drive themselves, we're all well attuned to the benefits of technology and innovation as it assists our everyday lives and increases efficiency.

While technology's role in enhancing health and wellbeing is significant, from advanced medical diagnostics to sophisticated training equipment, the question remains: how can we push these boundaries further? At Lake Nona Performance Club (LNPC), this challenge is met head-on. Here, the most cutting-edge innovations are being harnessed with a specific goal in mind: to dramatically improve personal health and extend human longevity.

By putting the latest health science and performance technology into the hands of its members, LNPC empowers individuals to take their personal health and wellness to new levels. The state-of-the-art 130,000-square-foot fitness, sports and integrated wellness facility offers a variety of technological solutions designed to better the community by bettering the individual.

Power of Performers

Members, also known as Performers, have access to the latest health-based tech from day one. The fitness floor is decked out with the latest equipment, and the group exercise schedule is packed with 100+ fitness classes including Les Mills®, cycling and barre offerings. But your health journey doesn't end there.

Each new member has the opportunity to complete a complimentary onboarding metabolic and movement assessment to understand their health, functionality, and performance over time. The **Kinotek** motion capture technology measures flexibility and recognizes motion deficiencies while the **InBody Test** provides a quick and accurate body composition analysis with a detailed breakdown of your weight in terms of muscle, fat, and water.

On the Fitness Floor, **Technogym®** equipment elevates the entire workout experience to "smart club" status. Adaptive touch screens and intuitive programming on the treadmills, cycles, ellipticals and other machines allow exercisers full control over their workouts. Members can monitor their speed, endurance and strength goals at the touch of a button and create sessions that are both enjoyable and aligned with their goals.

Prescriptive Technology

If you're looking to level up your wellbeing, LNPC offers additional programs and upgrades to help its members achieve whole-body health. In the **Precision RX Metabolic Health & Human Performance Lab**, members gain an increased understanding of their body's unique metabolism, allowing trainers to prescribe a customized nutrition and exercise plan that's individually tailored to optimize performance and achieve their personal goals.

LNPC takes a whole-person approach to wellness, including mental health. As such, non-invasive **NESTRE** brain-mapping technology can be utilized to improve neuroplasticity, otherwise known as the brain's ability to change. Used by professional athletes and high-performing individuals, NESTRE scans the brain

and subsequently creates training plans designed to increase processing speeds, motor function, complexity tolerance, sleep (recovery) quality and much more.

Located adjacent to the LNPC is Fountain Life, an innovator in the vitality and anti-aging space. By combining the newer science of AI, genomics, and gene therapy with more familiar practices of MRI, CT scans, cardiograms, and bone density scans, **Fountain Life** helps to pinpoint health risks, often before they're even symptomatic. This breakthrough diagnostic technology presents life-saving opportunities for individuals to course-correct their lifestyle choices in light of impending degeneration or disease, thus improving potential longevity.

Performance Technology

In addition to health science technology, LNPC provides members with some high-tech solutions that are both functional and just plain fun. Performance-based technology helps LNPC members up their game in ways that are important to them on a physical and mental level.

For example, LNPC is pleased to partner with **InClubGolf** to offer a specialized indoor golf training experience — the first-of-its-kind in the Southeast. InClubGolf provides year-round, PGA-guided practice sessions for golfers of all skill levels. InClubGolf's proprietary technology includes TrackMan 4 radar-based monitoring, Boditrak pressure mat and swing rotation tech, Arccos adjustable putting lab, and much more. There's even a Smart Start Golf program to teach etiquette, rules, and traditions to new golfers.

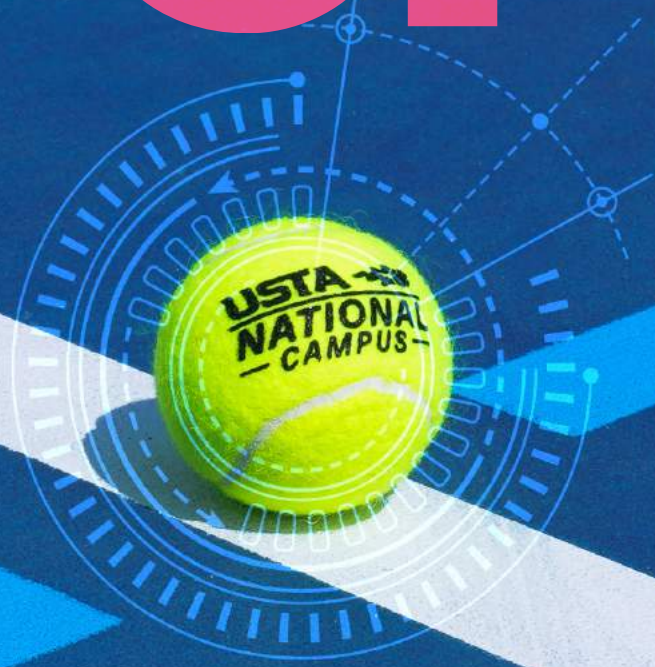
LNPC also serves the ever-expanding Esports community and Magic Gaming team through GameRDY, an elite lab to enhance competitive Esports athletes. **GameRDY** works with other club programs to optimize the physical and mental health of Esports participants. For instance, training may include mindfulness and resiliency exercises at the Chopra Mind-Body Zone or cognitive training plans through NESTRE. GameRDY recognizes and responds to the unique requirements of Esports athletes in order to improve overall gaming performance.

An Ongoing Commitment to Technology

LNPC incorporates the very best in health science and sports performance technology into every aspect of its facility, but did you know it's also infused with the latest smart-building tech? Predictive tinting from View Smart Windows, A/V light technology from Healte Lighting, and HEPA air-quality filters all create the ideal atmosphere for healthy recreation and body comfort.

As the field of health and fitness technology continues to grow, LNPC is excited to continue to offer the latest assessment, prescriptive, and performance equipment to its members and the community at large. The mission of LNPC includes fully integrated, whole-person health and the right technology plays a vital role in achieving that goal for all members. **LN.**

Sports Lover's



Guide

WHETHER YOU'RE ONE OF THE PROS, TRAINING TO BE ONE, OR JUST LOOKING FOR WAYS TO STAY ACTIVE, LAKE NONA IS THE PERFECT HOME BASE FOR EVERY KIND OF ATHLETE.

We've built our ever-expanding wellbeing ecosystem to include everything from dozens of parks and more than 44 miles of trails to world-class fitness facilities like the United States Tennis Association (USTA) National Campus and the Lake Nona Performance Club. We're even exploring what the future of sports and performance will look like with Verizon 5G-powered solutions in the leAD Lake Nona Sports & Health Tech Accelerator in the Pixon MS² Innovation Space.

USTA National Campus

At the USTA National Campus, pros come to train and neighbors come to learn and play together. It's here where you'll find 100 tennis courts, both indoor and outdoor, and by incorporating the latest technology, USTA provides an unparalleled playing, training and education experience for players, coaches, officials, administrators and spectators alike. Eighty-four of the courts feature live streaming, powered by PlaySight, which allows friends and family from anywhere in the world to watch a match. Additionally, 26 of the campus' courts feature PlaySight Smart Court technology, which captures the player's every move and shot, providing data to measure ball speed, step count, spin, height, and placement of the ball, allowing players to review their game after each set.

Lake Nona Performance Club

The Lake Nona Performance Club (LNPC) is redefining the fitness center experience with a tailored approach to whole-person health for members of all ages and skill levels with leading-edge workout equipment, state-of-the-art classes and interactive programs. The Club's exclusive amenities include access to experts in healthcare and exercise, an aquatic center, indoor track, rock-climbing gym and the Chopra Mind-Body Zone & Spa – a first-of-its-kind partnership bringing Deepak Chopra's signature movement and spa programs to Lake Nona.

Lake Nona Golf & Country Club

Recognized as one of the world's top private golf club communities, Lake Nona Golf & Country Club is home to many professional athletes who enjoy a wealth of sports and recreational amenities, including: an 18-hole Tom Fazio-designed, championship golf course; The Workshop - a fully equipped golf performance center; an all-inclusive fitness center outfitted with the latest Technogym® equipment; state-of-the-art tennis and pickleball facilities and a trio of waterways. Enhancing these amenities is the introduction of new technology for 2024, including an entirely new golf cart fleet outfitted with Visage GPS elevating the golfing experience along with the addition of exciting instructional technologies such as SAM Putt Lab, Bull 3D Capture System, Swing Catalyst Dual Force Plates and a Zen Green Stage now available for players of all levels to enhance their game at The Workshop.

Drive Shack

Avid and amateur golfers can practice their swing at Drive Shack, rain or shine, and get real time swing stats with radar-based TrackMan™ Range technology, which provides unparalleled precision ball tracking, in real time, for the venue's 200-plus yard field. The all-weather, three-story driving range features 90 hitting bays with interactive games, a retro arcade, full-service restaurant, bar and rooftop terrace.

XL Soccer World

Soccer fans can play indoors all year round at XL Soccer World. The indoor facility features two turf fields and two multi-purpose courts and offers a variety of youth programs and adult leagues for players of all ages and skill levels.

Nona Adventure Park

Water sport enthusiasts can wakeboard and waterski at Nona Adventure Park. Stay above water with paddle boards and kayak rentals or bounce around on the floating obstacle course. Prefer to stay on land or above it? The park also includes a 60-foot climbing tower and ropes course, events pavilion, beach and grill for lakeside relaxation.

Beach Volleyball Courts at Boxi Park

A set of sand volleyball courts at Boxi Park is where pro beach volleyball players and Lake Nona residents, Phil and Jennifer Dalhausser, run the Phil Dalhausser Beach Volleyball Academy. Together, they're serving up youth training, adult leagues and more.

Lake Nona YMCA

The Lake Nona YMCA is open to all Y members and residents of NorthLake Park for swimming, group exercise classes and other healthy programming. This first-of-its-kind center features an innovative public-private partnership with NorthLake Park Community School, meaning students have access to the YMCA's resources, plus increased parent, teacher and student involvement all under one roof.

Parks and Trails

Bikers and joggers love our 40+ miles of trails connecting you to community playgrounds and parks, green spaces and more. Our trails are great for walking too and give you one more reason to move your body, get some fresh air and soak up the Florida sunshine.

Pixon MS² Innovation Space

The Pixon MS² Innovation Space provides a vibrant environment lined with art and complete with co-working spaces, conference rooms and common areas to allow entrepreneurs and startups, including the leAD Lake Nona Sports & Health Tech Accelerator participants, to partner with the Verizon 5G Hub to conceive, test and implement their ideas.

Startup companies like Kinotek, NESTRE and Phlex have reimagined the approach to sports and performance and the future for tomorrow's athletes in the leAD Lake Nona Sports & Health Tech Accelerator. Innovators at MS² are conducting their research with the backing of 5G Ultra-Wideband, enabling new discoveries in healthcare, autonomous mobility and retail experiences and fast-track innovations from idea to action.

Magic Gaming

One of the latest additions to the Pixon MS² Innovation Space is Magic Gaming, the official NBA2K affiliate team for the Orlando Magic. With a goal to become more connected to the community, Magic Gaming will host live gaming events in Lake Nona. **LN.**

ART IS IN OUR DNA

LAKE NONA ART TOUR

At the heart of every good community is a blend of arts and culture. From public art installations and live music to some of Orlando's greatest artistic institutions, Lake Nona offers plenty of chances to kick back, relax, and be inspired. In Lake Nona, arts and culture are truly part of our DNA.

Check out more here:



1. Lake Nona Sculpture Garden

The Lake Nona Sculpture Garden is a 50,000 square-foot outdoor space that is designed for exploration and discovery, as well as home to a world-class art collection.

2. The Beacon and Code Wall

Located in Town Center, "The Beacon" is a six-story landmark with a visual experience of video, music and interactive elements. Alongside stands "Code Wall," an installation of specialized dichroic glass with messages written in binary code.

3. Pixon Art Scene

A trio of talented women artists are behind the art installations located throughout Pixon. Their custom artwork created with printed digital artwork, chalk and spray paint can be admired from the outside and inside.

4. Glass House

Situated in Laureate Park near Canvas Restaurant & Market is "Glass House," a stunning work of installation art conceived and constructed by Brooklyn-based artist Tom Fruin. It utilizes reclaimed materials and pulls cues from sustainable urban design and American folk art.

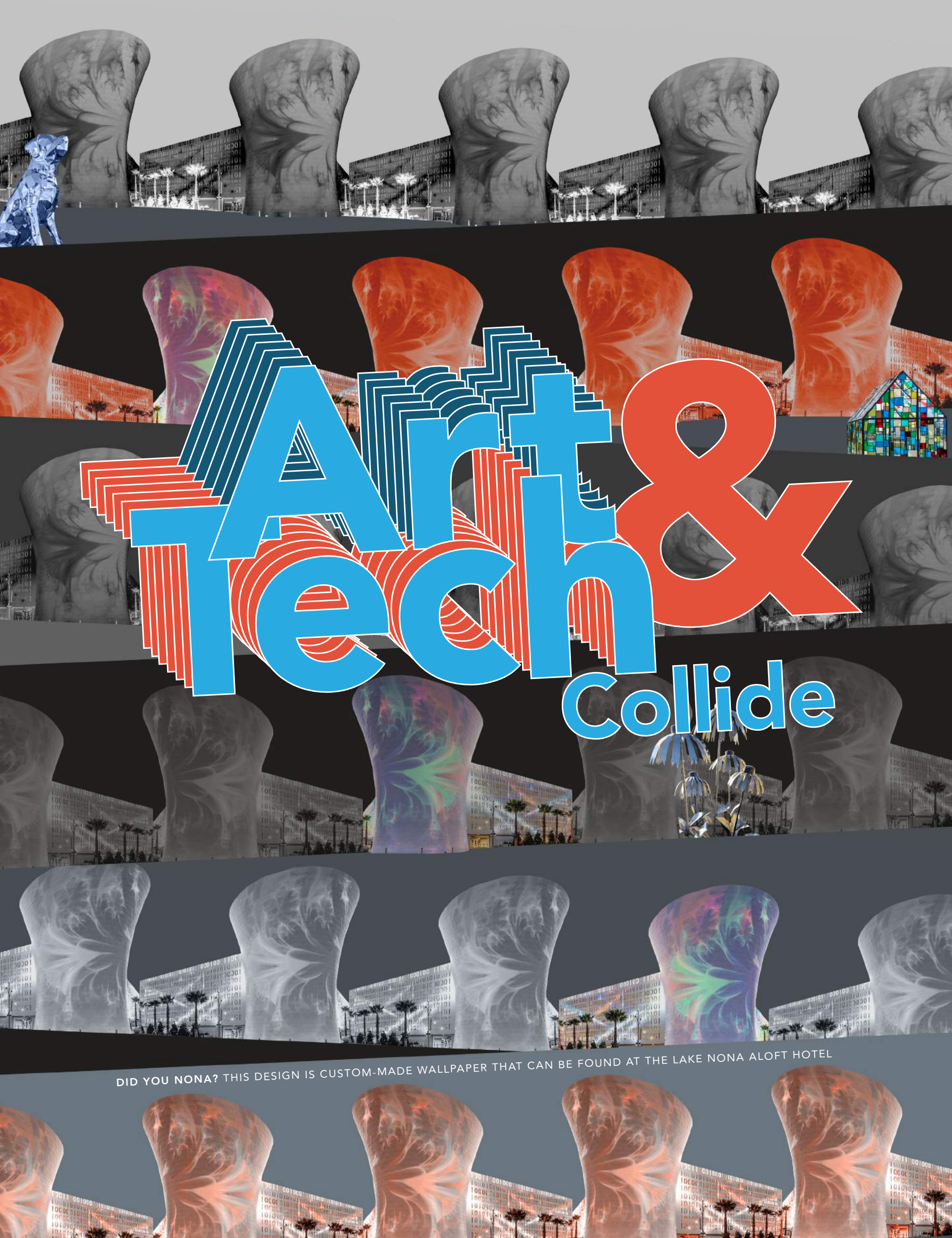
5. Lake Nona Sign & Prismatic

The mural's cascade of color and artistic sign transforms a Town Center chiller plant into an Instagram-worthy artistic display.

6. DISCO Dog Sculpture

The friendly and photogenic 35-foot tall stainless steel Labrador sculpture welcomes visitors to Town Center and was named by the community via an online poll. LN.





WHERE ART MEETS INNOVATION

HOW THE TWO INTERSECT TO CREATE A PLACE LIKE NO OTHER.

After spending any time in Lake Nona, you've probably realized that even a quick visit is likely to reveal something you've never seen or experienced before. For example, a parking garage turned masterpiece, a mesmerizing digital mural, or even a towering disco ball-meets-dog sculpture.

That's no accident. As Juan Santos, Senior Vice President of Brand Experience and Innovation at Tavistock Development Company, will tell you. Lake Nona was thoughtfully designed to be a one-of-a-kind place with one-of-a-kind experiences. A place that generates unique opportunities for new ideas to take hold.

Art helps to create those exceptional experiences. It makes a community feel more vibrant and alive while helping to foster a shared identity and a feeling of belonging. And with innovation and technology at the heart of the Lake Nona experience, it only makes sense that the two blend with art to create a community like no other.

Anchored in art

This idea of placemaking has been a priority in Lake Nona from day one. So, it's no surprise that the community's most recognizable landmark combines art and technology with truly unique results. "The Beacon", standing six-stories tall in the heart of the Town Center, is a collaboration between Lake Nona resident artist JEFRE, New York-based artist Michael Counts and 3-Legged Dog Media & Theater Group. The enormous steel structure acts as a projection wall — a vast canvas where digital art comes to life each night. Video, music and interactive elements combine to transform "The Beacon" into everything from a larger-than-life aquarium to an interstellar-inspired scene to a colossal colorful kaleidoscope.

Transforming the ordinary into extraordinary

Everything in Lake Nona is designed with purpose. This means even utilitarian buildings are transformed and elevated into objects of art — amplified by innovation.

The Town Center's "Code Wall" is a perfect example of this. What could've been just another standard parking garage is instead a remarkable work of art. The garage features a 264-foot-long metal façade designed with messages about the vision and purpose of Lake Nona written in binary code. Rainbow prisms bounce off the structure thanks to its mounted dichroic glass plates, dotting the building with pops of color throughout the day.

Two additional Lake Nona garages double as public art and are also inspired by the idea of languages. Instead of binary code, the Town Center's DNA Garage represents the language of life. The garage's exterior is wrapped with bright, color-coded vertical bars that follow the DNA sequence of a Valencia Orange and mimics the shape of a double helix. At Wave, the world's most technologically advanced hotel, the Wave Garage is inspired by the Braille writing system. Designed by JEFRE, the exterior of the structure features circle cutouts in varying sizes and LED accent lights.

Lake Nona's latest building to transform into a community art piece? A sustainable chiller plant. Thanks to Carissa Bloemeke's "Prismatic" mural, the building went from unmemorable to unforgettable with rows of vibrant color inspired by a deconstructed prism lining its exterior.

Interactive and immersive

Art in Lake Nona can be found at nearly every corner — quite literally — and innovation is on full display in the many ways you can experience it.



The Lake Nona Art Tour guides art lovers through a rich and informative walking tour of art installations, sculptures, murals and more through QR codes at every stop. The codes unlock more information about the artist behind the work and their inspiration.

A noteworthy stop includes the Lake Nona Sculpture Garden, a stunning collection of masterworks from one of the world's largest private art collections, including some of the most recognized sculptures in the world like the iconic "Charging Bull" by Arturo di Modica. The Disco Dog Sculpture by JEFRE in Lake Nona Town Center and the Glass House, a stunning stained-glass installation by Brooklyn-

based artist Tom Fruin nestled in Laureate Park near Canvas Restaurant & Market are two additional can't-miss stops.

Light it up

Some buildings throughout Lake Nona use light to become works of art themselves beyond their architecture.

Select Town Center buildings, the Wave Hotel and another mixed-use space known as the Jewel Box building all feature customizable exterior lights. Color-changing LED light strips installed in between their window panels can be adjusted to match community events or holidays.

Nemours Children's Hospital also uses light in both a functional and inspiring way. Each room features an interactive LED lighting system that lets patients choose the color of the ambient light in their room, making them feel more comfortable during their stay. Seen from the street through the hospital's floor to ceiling windows, the multi-colored lights create a candy-colored checkerboard that brightens the community each night.

As Lake Nona grows, so will the ways that art and technology intersect to create a place unlike anywhere else. As Santos sees it, that evolution — the emergence of new ideas, new thoughts, new ways of working — is the goal. It's the necessary ingredient for innovation, and in turn, for creating memorable experiences, building successful businesses and crafting meaningful lives.

Lake Nona is proof that when you mix art, innovation and a touch of technological magic, you create a community that's not just alive — it's thriving. **LN.**

FAUNE

Lake Nona's collaboration with Snap! Orlando's CITY UNSEEN project introduced FAUNE, an augmented reality masterpiece by Adrien Mondot and Claire Bardainne, that enchanted thousands. Through their smartphones, visitors interacted with ten large-format posters, each bursting into life with animations and sounds of fantastical creatures. This immersive exhibition blended art and technology, creating unforgettable moments of discovery and wonder in the heart of our community from January to April 2024.



DID YOU NONA? THIS DESIGN IS CUSTOM-MADE WALLPAPER THAT CAN BE FOUND AT THE LAKE NONA ALOFT HOTEL

The Lake Nona App

NOW AT YOUR FINGERTIPS

Download the app to get details on exciting events and happenings in Lake Nona



Lake Nona Live CONCERT SERIES



Year-Round Live Music Festivals in the Heart of Lake Nona

LAKE NONA
TOWN CENTER



TEACHING YOUNG INNOVATORS

LAKE NONA STUDENTS AT THE CREATIVE EDGE OF FUTURE TECH

Within the Lake Nona school system – from Pre-K to PhD – more than 16,000 students are utilizing tools every day that help them develop increased technological literacy, develop solutions to complex problems and encourage big-picture thinking. With these tools, Lake Nona’s education ecosystem positions students to be leaders and innovators in their fields, no matter what path they choose.

Like learning a new language, there’s no better time to learn technological literacy and encourage creative innovation than right from the start of a child’s education. As they grow, and the tech world develops right alongside them, they’ll be ready to take on the big challenges that the industry is ready to solve.

Early Education: Lake Nona Littles Explore Their World

Lake Nona’s littlest learners learn the basics to ready them to take on the world. Lake Nona preschools, including Primrose School, Goddard School and The Learning Experience place emphasis on a curriculum-based learning model that provides both fun and structure.

Amazing Explorers is a specialized STEAM (science, technology, engineering, arts and math) program that benefits children’s learning processes. The school’s program believes that science is the foundation of children’s learning about their world, and offers children the opportunity to explore, investigate and learn in natural ways.

Elementary School: Personal Tech Aids Early-Grade Learning

Each elementary-aged student in Lake Nona across three major primary schools — NorthLake Park Community School, Laureate Park Elementary School and Village Park Elementary School — uses technology to aid in the learning process every day.

iPads and laptops are introduced to students in the classroom as early as kindergarten. Teachers use interactive software to encourage participation and assign classwork, while parents stay connected with their child’s teacher and can get a snapshot of their learning progress at the touch of a finger.

Middle School: Innovation Drives Student Learning

At Lake Nona Middle School, students are continually encouraged to develop new ways of solving problems and to join organizations that foster investigative learning and innovation. When Luminary Middle School in Laureate Park opens for the 2024-25 school year, that focus will expand to a new group of students.

Lake Nona Middle School hosts the “Sun Games” each March, a project-based event where students form teams to design and construct a practical solution that uses solar power.

High School: Future-Proofing Students’ Education is Key in High School

As students start thinking about where they’d like their careers to lead, the educators at Lake Nona High School are continually adding technology and innovation methods to their curriculum. The school is also a participant in LaunchED from Orange County Public Schools, which provides a digital device to each student to ensure college and career readiness.

Lake Nona High School’s agriscience department, which teaches the value and technical sciences behind farming, was granted a FarmBot in the spring of 2023. The first of its kind in Central Florida high schools, the AI robot is controlled with a cell phone and can assist students with gardening duties.

Post-Secondary Education: Fostering Innovation and Leadership in Fields of Study

One of the main values of Lake Nona is to provide excellent educational opportunities while remaining a leader in technology and innovation, along with human performance.

The Lake Nona campus of Valencia College, the UCF Academic Health Sciences Campus, which includes the College of Medicine, the Burnett School of Biomedical Sciences and the future College of Nursing, and the UF Research and Academic Center, home to the UF College of Pharmacy, all share a vision for student success and technology fluency.

Valencia College’s Lake Nona campus is the first to offer an Associate of Science degree in Biotechnology Laboratory Sciences. Researchers at the UCF College of Medicine are working to solve microbiological issues within the nation’s food supply. And at the UF College of Pharmacy, researchers perform basic, translational and clinical research to aid in drug development and discovery. **LN.**



RE-WILDING OF LAKE NONA

A BLUEPRINT FOR URBAN ECOSYSTEMS



In Lake Nona, you'll find more than eye-catching art and impressive architectural design. As you wander along our trails or go about your day, there's a lively ecological tapestry unfolding around you, blending the beauty of nature into the fabric of our community.

Natural spaces, from lush gardens to glimmering ponds, are integral to everyday life in Lake Nona. This setting is where thoughtful urban planning and ecological care come together. At the heart of this effort is Lake Nona's passionate landscaping team. They go beyond traditional landscaping, to create and nurture ecosystems that enhance both the area's aesthetics and its biodiversity. Their efforts are central to the community's environmental health.

Director of Landscape Architecture, Jeff Thompson, leads the initiative with a pragmatic approach. The vibrant plants across Lake Nona, from the Town Center to Laureate Park, have been specifically selected to attract mason bees, as one example. These friendly bees are key to our ecosystem, thriving in community settings and excelling in pollination, their hard work naturally improves soil quality.

"Mason bees are terrific pollinators and are key to sustaining our ecosystem by helping plants reproduce," said Thompson. "And they're solitary, unlike honeybees. This makes them much more docile and they can adapt better to a modern suburban environment like Lake Nona."

But mason bees aren't the only insects buzzing into Lake Nona. Blooming nectar plants are also attracting butterflies. Did you know that Florida is home to more than 200 species of butterflies? From Monarchs and Swallowtails to Zebra Longwings (our state butterfly), there are so many different species that have a home in Lake Nona.

Rising above the flowerbeds are the ecosystem's foundation – trees. And in Lake Nona, we have a lot of them. From preserved green spaces to new landscaping additions, trees are crucial to a productive ecosystem.

Since 2018, Lake Nona's tree relocation program has moved more than 600 trees, including oaks, palms, crepe myrtles and maples, to new homes throughout the community. These mature trees add immediate value to the Lake Nona ecosystem. Thanks to their wide canopies, mature trees provide shade and nesting and sheltering space for birds, mammals and insects.

To make the trails more enjoyable during Florida's sunny days, long-leaf pines have been added, providing shade and attracting local wildlife like playful and lively fox squirrels.

Home to more than 1,000 acres of lakes and waterways, the bodies of water in Lake Nona also play a critical role in our community's ecosystem. Beneath the serene surfaces of Lake Nona's many ponds lie a rich aquatic ecosystem, teeming with life.

Over the last few years, Lake Nona's landscaping team have introduced a variety of fish species including bass, catfish and bluegills. Most notable, however, are the mosquitofish who have an appetite for mosquito larvae, serving as a natural pest control and helping to keep the pests at bay before they become a problem. Additionally, the placement of bat and martin houses aids in controlling adult mosquito populations, reducing the reliance on pesticides.

The rewilding of these ponds didn't stop at the water's edge - the shores of these ponds have been adorned with littoral plants, creating lush green belts that not only enhance the beauty of the landscape but also serve as vital habitats for a multitude of creatures. These verdant fringes have become a home for amphibians, a hunting ground for insects and a buffet for birds.

Speaking of birds, you may have noticed that the skies above Lake Nona have become a playground for beautiful birds like eagles, grackles and cardinals. Rare species such as the roseate spoonbill and scissor-tail kite grace the skies with their majestic presence, drawn to the area by the abundance of food and suitable nesting sites. A new initiative to add shrimp to our lakes keeps the spoonbill bird satiated and lends to its pink hue. While the introduction of cypress trees around the ponds has been a game-changer, providing the perfect roosting and nesting spots for these feathered visitors.

As Lake Nona grows, its ecosystem flourishes alongside, shaping a community lifestyle that balances urban living with natural beauty. Every initiative, big and small, helps strike a balance between cutting-edge amenities and Florida's rich biodiversity, enriching the lives of those who live, work and visit Lake Nona. **LN.**



Get in on the action by creating your own butterfly garden. Scan for information and tips.



ADVANCING HEALTHCARE IN YOUR BACKYARD

OUR UNIQUE 17-SQUARE-MILE COMMUNITY SERVES AS A “LIVING LAB” FOR COMPANIES LOOKING TO BUILD, TEST AND DEPLOY INNOVATIVE SOLUTIONS AT SCALE. BUILT FOR THE FUTURE, LAKE NONA IS CISCO’S FIRST ICONIC SMART+CONNECTED CITY IN THE COUNTRY WITH A 5G INFRASTRUCTURE WIRED FOR WHAT’S NEXT.

Perhaps one of the most appealing aspects of Lake Nona is the highly educated population that calls it and the surrounding areas home. These tech-forward, early adopters make up the workforce of the industry-leading businesses here, many of which are within Lake Nona’s Health and Life Sciences Campus. This globally recognized cluster of businesses and institutions includes the Orlando VA Medical Center, UCF College of Medicine, UCF Lake Nona Hospital, UF Research & Academic Center, Nemours Children’s Hospital and GuideWell Innovation Center.

Specifically, you’ll find key companies in Lake Nona are at the frontier of innovating health and wellbeing by leveraging cutting-edge technologies to improve patient care and pushing the boundaries of what’s possible.

Simulation Training for VA Physicians

At the USTA National Campus pros come to train and neighbors come to learn and SimVET (formerly SimLEARN) at the Orlando VA Medical Center is committed to evolving simulation-based training for frontline healthcare workers. Through training and tests conducted both virtually and in a 51,000-square-foot, simulated hospital, SimVET aims to enhance patient outcomes at VA care sites across the nation.

leAD Sports Accelerator Inside the Pixon MS² Innovation Space

Imagine: the most advanced fitness wearable on the market. A software that combats cognitive decline throughout the lifespan. A platform delivering accurate kinesthetic analysis to medical, sports and fitness professionals. These inventions might sound futuristic, but they already exist — and they were built right here in Lake Nona. Graduates of the leAD startup incubator are enhancing wellbeing every day by harnessing innovative technological problem solving.

Using AI to Benefit the Patient Experience

UCF Lake Nona Hospital is running a promising pilot program with Google’s Vertex AI software. With the aim of eventually integrating machine learning into operations, the hospital is looking toward a future where workflows are streamlined so providers can spend more time with their patients.

Tech for Your Whole Health

You might already be aware of Lake Nona Performance Club’s robust suite of athletic facilities. What you might not know is that, using the very latest in nutrition and metabolic science, LNPC’s Precision Rx Lab is empowering clients to take control of their weight and their health. The goal? To prevent future ailments with bespoke, proactive solutions.

Extending and Improving Quality of Life with AI

Fountain Life is yet another partner that’s leveraging technology to enhance preventive care. Capitalizing on AI and other advanced biometric techniques, Fountain Life seeks to extend and improve quality of life. It’s a mission perfectly aligned with the Lake Nona model of a community focused on vibrant wellbeing.

Regenerative Medicine in Orthopaedic

At The Hughston Clinic, Dr. Vonda Wright emphasizes best practices in orthopaedic surgery techniques, while also introducing select game-changing clinical advancements such as orthobiologics. Specific techniques like platelet-rich plasma injections and bone marrow matrix are used to improve patients’ quality of life.

Simplifying Biopsies

Protean BioDiagnostics is a precision oncology company located at the GuideWell Innovation Center. Their cutting-edge laboratory diagnostic tools are set to revolutionize the future of cancer treatment. Protean’s “liquid biopsies,” which provide biopsy results from blood samples, help personalize treatment regimens to meet individual needs.

The Lake Nona health and life sciences ecosystem is driving a paradigm shift in healthcare. For these partners, technology is not simply a useful tool, but a way to transform how we care for bodies and minds. **LN.**

HAPPY & HEALTHY



YEAR-ROUND

WITH PARKS AROUND EVERY CORNER AND MILES OF PAVED AND UNPAVED TRAILS, THERE ARE PLENTY OF REASONS TO GET OUTSIDE IN LAKE NONA.



From neighborhood gyms and community parks to one-of-a-kind sports venues, miles of trails, and engaging public art, Lake Nona is designed to support healthy living. Our amenities provide you with all the tools to be the healthiest, happiest you.

Get Outside

Breathe your way into the weekend on Saturday mornings in Crescent Park with a complimentary hour-long yoga class. The comfortably paced classes allow time for beginners to find their poses and advanced yogis to find their edges.

Visit one or both of Lake Nona's two City of Orlando parks: Heroes Community Park and McCoy Community Park. Within walking distance of Laureate Park Elementary School, Heroes Community Park features four multi-use fields lit for night activities. The park also has plenty of green space and a 12-foot-wide trail for walking and jogging. Or, play ball at the McCoy Community Park located on Dowden Road near NorthLake Park. The 25-acre park features a pony field, softball field and two Little League fields perfect for practicing your swing. The park also connects to Lake Nona's robust trail system.

One-of-a-kind Facilities

Take a swim lesson or fitness class at Lake Nona's YMCA Family Center open to all YMCA members and residents of NorthLake Park. Nearby, the 100-court USTA National Campus offers a chance for families with children under 10 to play tennis together in the Nemours Family Zone in addition to a variety of individual programs for kids and adults. The National Campus also hosts free programs for military veterans, active service members and anyone with physical disabilities.

Pros and amateurs alike can get in the game at the XL Soccer World located off Narcoossee Road near the Valencia College Campus. The 50,000-square-foot, state-of-the-art facility offers a variety of youth programs and adult leagues for players of all ages and skill levels with two turf fields and two multipurpose courts all under one roof for year-round, air-conditioned play.

Looking to harness a particular skill? Practice your golf swing at one of Drive Shack's 90 full-service, all-weather hitting bays featuring interactive games designed for all skill levels. Or you can get your heart rate up at any of Lake Nona's boutique fitness studios located on the ground floor of Pixon: Club Pilates and Studio SOUL.

Thrill seekers can head over to Nona Adventure Park – an outdoor water park packed with activities for all ages and skill levels. Providing an adventure like no other, the park features a floating aqua obstacle course, cable park for wakeboarding and water skiing and a 60-foot climbing tower and ropes course.

Lake Nona Performance Club

The Lake Nona Performance Club (LNPC) is one of the most comprehensive and thoughtfully curated clubs in the region providing a tailored approach to whole-person health for members of all ages and skill levels. LNPC redefines the fitness center experience featuring leading edge workout equipment, state-of-the-art classes and interactive programs driven by the latest performance technology and amenities.

Community Art

Lake Nona's public art program is filled with countless opportunities to explore, engage, and stimulate your mind – from digital displays on "The Beacon" and sunsets over the "Glass House" to handcrafted sculptures and colorful murals. We believe art harnesses an energy that elevates our community and enhances our mission to inspire human potential. By collaborating with artists and innovative thinkers, we use imagination to create an environment that sparks creativity. **LN.**



What does living well mean to us?

It's about enjoying a longer, healthier, and more prosperous life.

This is our chance to better understand how a community as special as ours can positively affect the wellbeing of its residents, employees and visitors. It's easy to get involved – you just need to live, work, study or play in Lake Nona and be willing to take a simple, yearly survey about your health and lifestyle choices. We'll use this information, in complete confidence, to find ways to help us live longer, live better and live well.

Participants will receive a **ONE-DAY ALL-ACCESS PASS** to **LAKE NONA PERFORMANCE CLUB**

LEARN HOW YOU CAN BE A PART OF LAKE NONA'S STORY AT [LIVWORKPARTICIPATE.COM](https://www.liveworkparticipate.com)

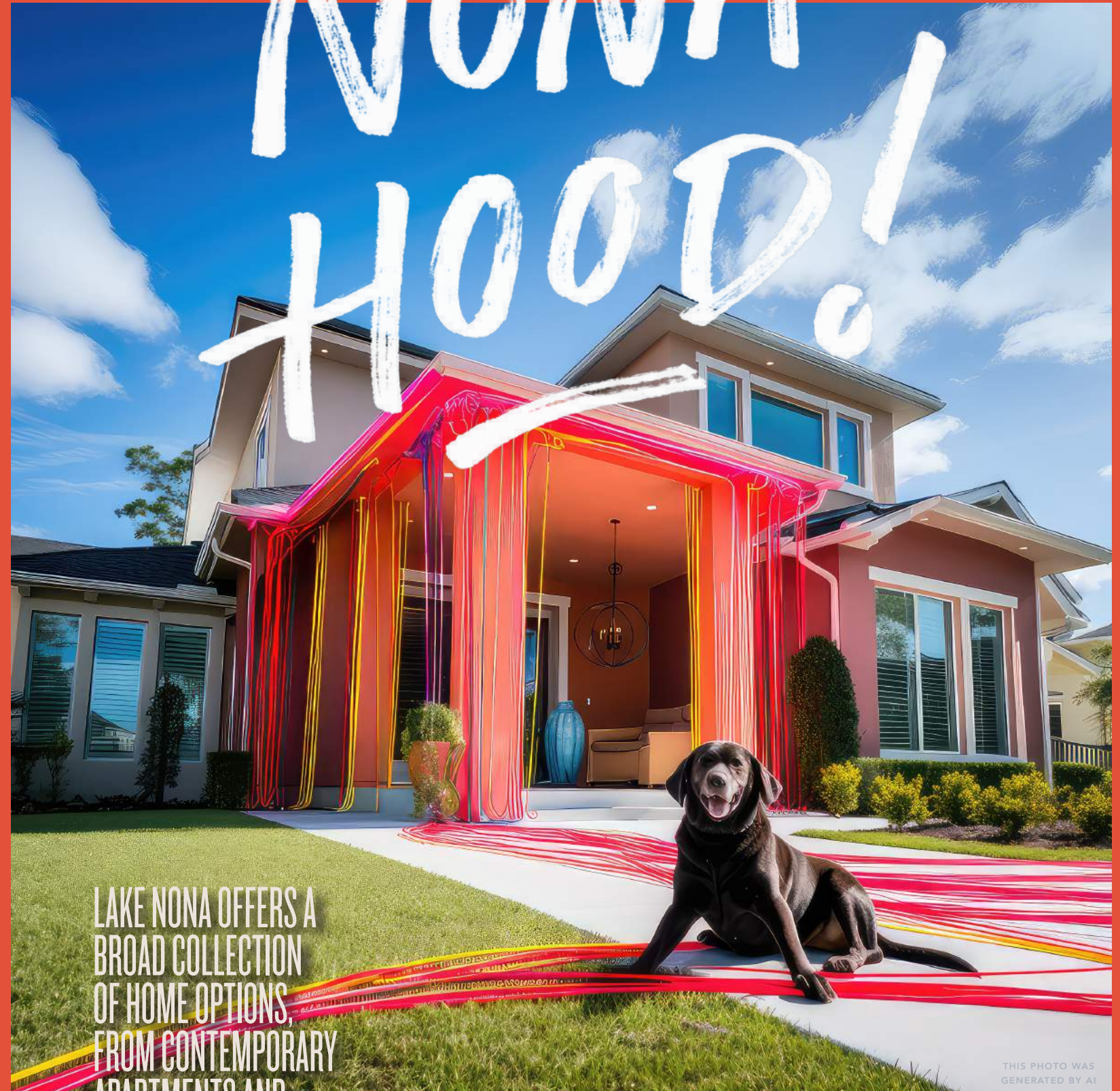
New and previous participants: scan here to participate in the new Survey 4.0



Lake Nona is the fastest-growing community in Orlando, and it's no surprise why.

A HOME FOR EVERYONE

NONA HOOD!



LAKE NONA OFFERS A BROAD COLLECTION OF HOME OPTIONS, FROM CONTEMPORARY APARTMENTS AND TOWNHOMES TO SINGLE-FAMILY HOMES AND SPACIOUS ESTATES.

THIS PHOTO WAS GENERATED BY AI

Explore our engaging neighborhoods and discover how to live life the Lake Nona way.

LAUREATE PARK

home sweet home



Laureate Park kids can make the most of sunny Florida days by playing at the neighborhood playgrounds complete with custom features created with little ones in mind.

Brightly colored bungalows, townhomes, cottages and multi-story homes are complemented by modern design and technology features, all situated around a Village Center with a resort-style Aquatic Center, LP Fit fitness center, Docksider event venue, Canvas Restaurant & Market, shops, schools, and Tom Fruin's Glass House.

Situated in the Laureate Park Village Center is artist Tom Fruin's Glass House, a stunning work of installation art that utilizes reclaimed materials and celebrates overlooked landmarks by pulling cues from urban design and American folk art.

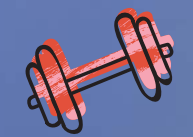


Miles of multi-use trails meander throughout Laureate Park to inspire active, healthy living.

DOCKSIDE

Docksider is the venue for many community events, including yoga classes, neighborhood gatherings, and celebrations of all kinds. It can also be rented for private events.

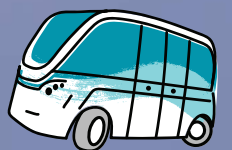
Visit docksidelakenona.com



LP Fit is a 3,200-square-foot, state-of-the-art fitness facility for Laureate Park residents.



The Laureate Park community gardens offer residents the chance to grow their own fresh fruits, veggies and herbs.



Lake Nona is home to the nation's longest running shuttle program.



Laureate Park's four-legged friends are invited to roam freely in the neighborhood dog parks.



Canvas Restaurant & Market features chef-driven cuisine accented with Florida seafood and an adjacent market, where guests can peruse the hand-curated collection of goods.



Laureate Park's beautifully manicured pocket parks provide quiet spaces to walk through, get back to nature, and connect with neighbors. All with the comfort and convenience of being close to home.



Hundreds of community events happen in Laureate Park each year including weekly Yoga and Meditation classes, live music and holiday celebrations.



The resort-style Aquatic Center features a splash pool complete with deck jets and water cannons, a tranquil pool with private cabanas and a lap pool with five junior Olympic lap lanes.



Craft Homes

CALL: 888.208.8041
VISIT: CRAFTHOMES.COM

TOWNHOMES
2-3 Bedrooms
2-2.5 Bathrooms
From 1,650 Sq. Ft.

SINGLE-FAMILY HOMES
3-5 Bedrooms
2-4.5 Bathrooms
From 1,773 Sq. Ft.

Mercer Model Home & Sales Center:
13450 Gabor Ave



ICI Homes

CALL: 407.900.0529
VISIT: ICIHOMES.COM

CUSTOM SINGLE-FAMILY HOMES
3-4 Bedrooms
3-3.5 Bathrooms
From 2,440 Sq. Ft.

Fiji Model Home & Sales Center:
10504 Pearson Avenue



Dream Finders Homes

CALL: 888.208.8041
VISIT: DREAMFINDERSHOMES.COM

SINGLE-FAMILY HOMES
3-5 Bedrooms
2-3.5 Bathrooms
From 1,976 Sq. Ft.

Talbot Model Home & Sales Center:
8704 Crick Alley





Gatherings® of Lake Nona is a 55+ Active Adult Community featuring new condos with elevator access, offering lifestyle-focused, amenity-heavy, low-maintenance condominiums and prime location, within walking distance of Lake Nona Town Center, the VA Medical Center and Laureate Park. Each home has a private balcony, a one-car garage and residents have access to a private pool, clubhouse and outdoor recreation within the community.

Beazer Homes

CALL: 321.445.5050
VISIT: GATHERINGSOFLAKENONA.COM

55+ CONDOS
2-3 Bedrooms
2 Bathrooms
From 1,368 Sq. Ft.

Model Home & Sales Center:
7573 Laureate Blvd.

Laurel Pointe is an intimate, luxury neighborhood of single-family homes with water or preserve views built with Toll Brothers' commitment to quality, value, and craftsmanship. Conveniently located close to A-rated Orange County schools and a short drive from Orlando International Airport, Laurel Pointe is near top shopping, dining, arts, and recreation destinations, including Lake Nona Town Center.

Toll Brothers

CALL: 407.248.5727
VISIT: LAURELPOINTELAKENONA.COM

SINGLE-FAMILY HOMES
3-7 Bedrooms
2-6 Bathrooms
From 2,976 Sq. Ft.

Model Home & Sales Center:
9429 Golden Laurel Lane





"Lake Nona is dedicated to excellence on and off the course." - TOM FAZIO

Welcoming you to the future of luxury living.

Lake Nona Realty offers an elevated home-buying and selling experience with concierge service and decades of neighborhood expertise. We don't just show you Lake Nona, we immerse you in it, giving you a sense of what it feels like to live in a place imbued with art, music, sports, nature and tech-focused, community amenities that put you at the center of future-forward living.

We know Lake Nona and the people more closely than anyone. After all, Lake Nona is in our name.



407.851.9091 • REALTY@LAKENONAREALTY.COM • LAKENONAREALTY.COM
9801 LAKE NONA CLUB DR. ORLANDO, FLORIDA, 32827



A STANDARD OF *excellence*

Recognized as one of the world's top private golf club communities, Lake Nona Golf & Country Club is a sanctuary of luxury estate homes and superb amenities nestled along the shores of Lake Nona.

Combining natural splendor with a dynamic lifestyle, highlighted by a wealth of amenities, elevated family experiences and outstanding service, Lake Nona Golf & Country Club has delivered exceptional living in Central Florida for more than 35 years.



9100 CHILTERN DRIVE, ORLANDO, FL 32827 | 407.209.1200 | LAKENONA.CLUB

SUMMERDALE PARK

ISLES OF LAKE NONA

LIVE



Located in the southern portion of Lake Nona along Boggy Creek Road, Summerdale Park is one of the newest neighborhoods to call home and features a community pool, parks, kayak launch dock and high-speed fiber optic internet.

Craft Homes

CALL: 407.605.6150
VISIT: CRAFTHOMES.COM

SINGLE-FAMILY HOMES

3-5 Bedrooms
2-5.5 Bathrooms
From 2,069 Sq. Ft.

Isles of Lake Nona is a luxury, gated community featuring single-family homes, townhomes and bungalows with open-concept floor plans, designer finishes and energy-efficient features by Pulte Homes. With homes built on a large interconnected network of ponds, homeowners can enjoy beautiful, scenic water views in a premier Lake Nona location.

Pulte Homes

CALL: 407.805.1637
VISIT: PULTE.COM/ISLESOFLAKENONA

Model Home & Sales Center:
10774 Pahoee Beach Place

TOWNHOMES

3-4 Bedrooms
2.5-3 Bathrooms
From 1,652 Sq. Ft.

BUNGALOWS

3-5 Bedrooms
2.5-3 Bathrooms
From 1,756 Sq. Ft.

SINGLE-FAMILY HOMES

2-7 Bedrooms
2-6.5 Bathrooms
From 1,889 Sq. Ft.





ARIEL

LAKENONAARIEL.COM
407.313.2660
14001 BENVOLIO CIRCLE
ORLANDO, FL 32824

Ariel, a luxury apartment community in Lake Nona, features one-, two- and three-bedroom apartments. Awarded the National Green Building Standard™ Silver Level Certification, Ariel Apartments are built with environmentally conscious designs including high-energy efficient windows, LED lighting and ENERGY STAR rated stainless steel appliances. Each resident can access a 24-hour fitness club featuring Technogym® equipment and virtual classes. The community is pet friendly and includes a dog park, pet washing station and agility course.



CONCORDE

LAKENONACONCORDE.COM
833.396.1603
10105 SELTEN WAY
ORLANDO, FL 32827

Lake Nona Concorde offers one-, two- and three-bedroom apartment homes situated within the new Lake Nona Greenwood mixed-use development, providing shops, restaurants, and services right outside your door. Here you'll enjoy vacation-inspired living every day, where the comforts of home and the luxuries of a resort stay come standard.



LandonHouse

LIVEATLANDONHOUSE.COM
407.313.2107
7010 LAKE NONA BOULEVARD
ORLANDO, FL 32827

LandonHouse Apartments provides people seeking a vibrant, urban lifestyle a new place to call home. Residents can rent a one-, two- or three-bedroom apartment, or choose an open studio floor plan for true "urban" living. All 279 apartments are accented by ten-foot ceilings and great views of the expanding Lake Nona Town Center. Amenities include a resort-style pool and green spaces, a game and media center featuring billiards, shuffleboard and retro arcade games, and a state-of-the-art fitness center. Additional amenities include a large outdoor pavilion with a fire pit and grilling area, a pet spa with grooming area, on-demand fitness classes, and an executive business conference center.



· P I X I O N ·

LAKENONAPIXON.COM
321.319.8755
7004 TAVISTOCK LAKES BLVD
ORLANDO, FL 32827

Located adjacent to Lake Nona Town Center, Pixion's 11-story main tower features a wide-range of housing options, including micro units, studios, one-bedroom and two-bedroom units, a 1,730-square-foot, three-bedroom penthouse with soaring ten-foot floor-to-ceiling windows, upgraded stainless steel appliances, cabinetry and quartz counter tops. Residents have access to an exclusive second-story lounge with a variety of work centers and outdoor amenity deck with an expansive backyard. The urban-inspired apartment community also features electric car charging stations and bicycle storage. The 24-hour gym features Technogym® equipment with on-demand fitness classes.



LAKE NONA WATER MARK

LAKENONAWATERMARK.COM
407.313.4663
7650 LOWER GATEWAY LOOP
ORLANDO, FL 32827

Located near Lake Nona's Sports & Performance District, Lake Nona Water Mark is a collection of 278 luxury apartments with six unique floor plans offering spacious one-, two- and three-bedroom homes with striking features at every turn. The 7,515-square-foot community clubhouse boasts a zero-entry resort-style pool, fireside veranda, outdoor kitchen, and a business center.

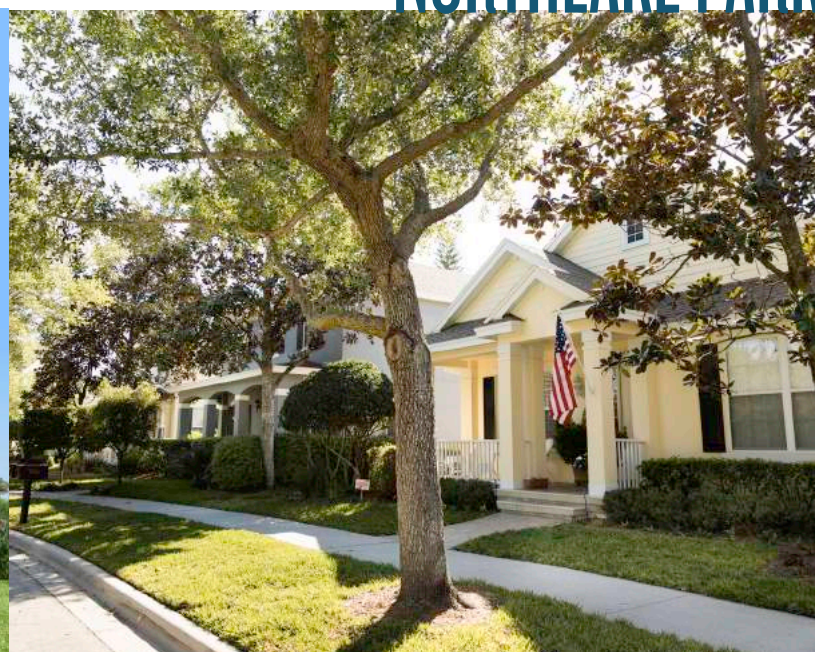


VILLAGEWALK & ENCLAVE AT VILLAGEWALK



VillageWalk blends resort-style living with a unique neighborhood design, creating a new concept of living in Central Florida. The neighborhood Town Center is connected by bridges and canals leading to lighted walking trails, swimming pools, parks and sport courts. The VillageWalk Town Center includes conveniences such as a café, salon, post office, bank, gas station and fitness center.

NORTHLAKE PARK



Situated on 500 acres in the northernmost point of Lake Nona, the NorthLake Park community offers single- and multi-family homes in addition to contemporary apartments. This expansive neighborhood is home to an award-winning school and YMCA, Olympic pool, sport courts and fields, and a dog park.



Insurance Coverage Designed For *Your Future*

SOMERSET CROSSINGS



Somerset Crossings is a townhome community by Pulte Homes featuring open-concept floor plans and resort-style amenities including a pool, cabana and playground. Residents enjoy easy access to major highways, such as SR 417 and the Beachline (SR 528), and conveniently located near Lake Nona Town Center and Orlando International Airport. Somerset Crossings is located in the Orange County School District. Surrounding schools include: Wyndham Lakes Elementary, South Creek Middle, and Cypress Creek High School.

SOMERSET PARK



Somerset Park is a gated neighborhood located in the western portion of Lake Nona. Home collections from Century Homes and M/I Homes bring a wide variety of choices for homebuyers. This neighborhood features a pool, dog park and playgrounds.

We take a holistic approach to crafting your coverage. Your personal Laureate Insurance Advisor will get to know your risk exposures and match you with an affordable tailored solution that compliments your current lifestyle and protects your future.



Call us at (407) 675-3880 or visit LaureateInsurance.com to learn more



THESE IMAGES
WERE NOT
MANIPULATED
BY AI

meet

WHIT

WELLNESS • HOME • INNOVATION • TECHNOLOGY

meetwhit.com

WHIT: THE HOME OF THE FUTURE

In the heart of Lake Nona, a community synonymous with innovation and wellness, stands the WHIT house - a symbol of groundbreaking advancements in healthy living, continually evolving with the latest technology and wellness-focused designs.

WHIT, an acronym for Wellness Home built on Innovation and Technology, is more than just a home, it's a true living laboratory and a platform for showcasing forward looking and game-changing technologies in the home. It's here where visitors and businesses can learn about the design, functionality and promising solutions in a real-world research environment. An initiative of the Lake Nona Institute and Tavistock Development Company, WHIT is a testament to the belief that our homes can significantly enhance our health.

Central to the innovative design of WHIT is the Wellness Kitchen, masterfully crafted by Vera Iconica Architecture. This unique culinary space transforms the idea of healthy eating. It boasts cutting-edge appliances available in the market, as well as prototype technology, including a prototype GE Innovative cooktop and Foodini, a pioneering 3D food printer. Additionally, the kitchen features the Natufia Hydroponic Kitchen Garden, fostering a connection with fresh ingredients. This kitchen is not just a space for cooking; it inspires homeowners to embrace nutritious cooking and eating habits, making wellness an enjoyable and accessible part of everyday life.

Another prominent feature of WHIT is the integration of View Smart Windows. These advanced windows intelligently adjust to maximize

daylight and views that contribute to the residents' wellbeing by optimizing natural light and reducing glare.

WHIT Home Garden and Landscaping aims to highlight sustainability and the idea of thinking globally while acting locally. The team at WHIT has taken steps to make the home's landscape more sustainable and address food production at a micro level of a single-family home by replacing traditional turf with low-maintenance groundcovers, planting long-lasting perennial plants instead of shrubs, incorporating fruit trees and installing a tea garden in the courtyard.

Next door to WHIT is Leviton Live, a showcase of simple, efficient and effective solutions for increasing home convenience and comfort. This partnership with Leviton, a leader in electrical, lighting, data networks and energy management solutions, offers a unique educational opportunity for builders and contractors to experience and better understand how the latest solutions, trends, and technologies can help them differentiate their businesses and better serve their customers.

As a living laboratory, WHIT stands as an example of what it means to live in a community that truly values health, technology, and the human experience. **LN.**



LAKE NONA®

BUILT BETTER



LILIUM
ORLANDO VERTIPORT



Lake Nona is a future-ready city, where cutting-edge ideas turn into realities. Our community is built on the premise that a collaborative ecosystem can spark profound innovation. Anchored by clusters of excellence in wellbeing, sports and human performance, education and technology, this fast-growing, neo-urban environment is pushing the boundaries of what it means to be a forward-thinking community.

Build your Business in Lake Nona, today.

FOR BUSINESS



ORLANDO IS HOME TO THE WORLD'S LARGEST CLUSTER OF MODELING, SIMULATION AND TRAINING (MS&T) ORGANIZATIONS AND SETS THE STAGE FOR VIRTUAL REALITY INNOVATION IN EDUCATION, HEALTHCARE, DEFENSE TRAINING AND MORE
(SOURCE: ORLANDO ECONOMIC PARTNERSHIP)

ORLANDO NAMED IN TOP 10 OF INC.'S 2020 SURGE CITIES LIST, CITING ORLANDO'S TRANSFORMATION INTO A RISING HIGH-TECH HUB
(SOURCE: INC.COM, 2020)

ORLANDO IS TOP 10 IN THE NATION TO FIND A NEW, HIGH-PAYING JOB WITHOUT SACRIFICING QUALITY OF LIFE
(SOURCE: CNBC, 2022)

500K+ HIGHER-EDUCATION STUDENTS WITHIN 100 MILES OF ORLANDO
(SOURCE: ORLANDO ECONOMIC PARTNERSHIP)

LAKE NONA IS HOME TO THE LARGEST AND LONGEST-RUNNING SINGLE-SITE AUTONOMOUS SHUTTLE NETWORK IN THE U.S.

Orlando is ranked
No. 1 Best Places in America for starting a business
(WALLETHUB, 2022)

LAKE NONA'S 650-ACRE HEALTH AND LIFE SCIENCES CLUSTER ENCOMPASSES MILLIONS OF SQUARE FEET OF CLINICAL, INSTITUTIONAL AND LABORATORY SPACE FOR SOME OF THE NATION'S TOP HOSPITALS, UNIVERSITIES, AND RESEARCH INSTITUTIONS

A LIVING LAB ENVIRONMENT THAT IS HOME TO A VARIETY OF SETTINGS, USES, AND INDUSTRIES TO TEST AND REFINE IDEAS FROM RESIDENTIAL AND RECREATIONAL TO HEALTH CARE AND HOSPITALITY

ORLANDO HAS OVER \$10 BILLION IN INFRASTRUCTURE INVESTMENTS UNDERWAY
(SOURCE: ORLANDO ECONOMIC PARTNERSHIP)

ORLANDO IS THE NO. 4 BEST MARKET IN U.S. FOR DEVELOPMENT OPPORTUNITIES
(SOURCE: CBRE, 2021)

THE MS' LAKE NONA SPORTS & HEALTH TECH ACCELERATOR IS A NEW, FIRST-OF-ITS-KIND, CUTTING-EDGE ACCELERATOR DESIGNED TO BOLSTER TECHNOLOGY START-UP COMPANIES IN CENTRAL FLORIDA

UCF PRODUCES MORE ENGINEERING GRADUATES WHO GET JOBS IN AEROSPACE AND DEFENSE COMPANIES THAN ANY OTHER U.S. UNIVERSITY
(SOURCE: UNIVERSITY OF CENTRAL FLORIDA)

THERE ARE THREE COLLEGES & UNIVERSITIES LOCATED IN LAKE NONA

WITH MORE THAN 69,000 STUDENTS, UCF IS ONE OF THE LARGEST UNIVERSITIES IN THE NATION
(SOURCE: UNIVERSITY OF CENTRAL FLORIDA)

NO. 2 IN THE COUNTRY FOR JOB GROWTH
(SOURCE: U.S. BUREAU OF LABOR STATISTICS, 2022)

With more than 25,000 miles of fiber installed,
Lake Nona is Florida's first gigabit community

ORLANDO'S GROWTH RATE IS THE 2ND FASTEST OF THE 30 LARGEST CITIES IN THE U.S., WITH THE REGION WELCOMING MORE THAN 1,000 NEW RESIDENTS EVERY WEEK

LAKE NONA FACTS AND FIGURES WERE COMPILED FROM MULTIPLE SOURCES, INCLUDING THE ANNUAL RESIDENT SURVEY.

ALL ROUTES LEAD TO LAKE NONA



THIS PHOTO WAS GENERATED BY AI

REDEFINING MOBILITY

Contiguous to Orlando International Airport and Brightline’s high-speed train station, and less than 45 minutes from the world’s busiest spaceport and a bustling cruise port, Lake Nona is integrating a first-of-its-kind multimodal network to enhance and advance regional mobility both in and beyond the boundaries of our community.

Miles of Trails

Thoughtfully designed from the ground up, Lake Nona is uniquely accommodating of today’s many modes of personal transit options, from foot traffic and cycling (both casual and commuter), to electric-assist personal vehicles and autonomous commuter shuttles. With more than 40 miles of paved and unpaved trails, designated bike lanes on most roadways and autonomous vehicle stops around high-traffic corners, each home and business is a launch point to the rest of our community and beyond.

to reduce traffic and pollution. Beep has eliminated the equivalent of more than 16,500 vehicle trips from Lake Nona roads, which amounts to a significant carbon footprint impact.

“When our passengers learn about their direct impact on helping the environment, they feel an additional sense of purpose to the program, which has helped us grow so quickly and develop additional partnerships that have contributed to our success,” says Moye.

Autonomous Mobility

Lake Nona is home to the largest and longest-running single-site autonomous fleet in the U.S., Move Nona, operated by the Lake Nona-headquartered Beep Mobility Solutions. Beep’s software and services, integrated with electric, multi-passenger autonomous shuttles, provide a safe and reliable mode of transportation to come to Lake Nona’s most popular spots.


Aerotropolis

Lake Nona is part of an emerging airport-centric economic development region, or aerotropolis, that harnesses the opportunities that aviation and aerospace bring to a region. Contiguous to each other, Lake Nona and the Orlando International Airport (MCO) encompass 37 square miles of land and are home to a new super-regional intermodal transportation center with light and express railway integration. For the everyday traveler, more than 150 international and domestic destinations are within reach by air from over 30 airlines, and the Brightline high-speed train station can transport passengers to five South Florida stations within a few hours.


Lake Nona’s living lab provides what Beep CEO Joe Moye called “a nirvana of use cases.” Beep serves many diverse segments, including business travelers, students, medical personnel, residents and visitors. This has provided Beep the ability to test and optimize its service exponentially with feedback from more than 60,000 passengers served since its launch in 2019.

Through a collaboration with the Greater Orlando Aviation Authority (GOAA), a location for a vertiport has been identified at a research and development center adjacent to Lake Nona on airport land. This emerging technology is becoming closer to reality, and we will continue to work with GOAA to advance the first announced eVTOL hub network in the US, which will benefit the entire state of Florida. **LN.**


The autonomous mobility program has enhanced public safety and the overall quality of life for both residents and visitors. It offers another transportation option, easing the hassles of commuting and helping



Move Nona is Lake Nona’s bold new approach to transportation, providing community visitors and residents with a variety of efficient and inter-connected ways to get around.



SCAN TO DOWNLOAD



Be sure to download the Ride Beep to access autonomous shuttle schedules, routes and stop locations.



REACH
REACH

FOR THE STARS

THIS PHOTO WAS GENERATED BY AI

WORK

LAKE NONA IS A SKY-HIGH INNOVATION HUB

Lake Nona is taking flight as a pivotal hub for the aviation and aerospace industries. Contiguous to Orlando International Airport and only 40 minutes from the Space Coast, it's more than just a location; it's a thriving hub for cutting-edge businesses.

Here, innovators like Signature Aviation, SIMCOM, dnata, and NUVIEW are thriving and leveraging the unique and interconnected ecosystem that Lake Nona offers.

Signature Aviation

Headquartered in Lake Nona, Signature Aviation is the world's largest fixed-base operation and distribution network for business and private aviation services. Their impressive reach extends to over 200 locations globally, providing a spectrum of services, including refueling, hangarage, and maintenance. Their commitment to unparalleled customer service truly sets them apart.

SIMCOM Aviation Training

SIMCOM Aviation Training is a leader in flight simulation and calls Lake Nona home for its new global headquarters and training facility. The 90,000-square-foot facility (with room to ultimately expand to 140,000 square feet) is a pinnacle of modern technology, featuring 12 full-flight simulator bays that train an estimated 10,000 private pilots each year for the skies.

dnata USA

A global air and travel services provider, dnata has established its U.S. headquarters right here in Lake Nona. Their cutting-edge office in Lake Nona Town Center is more than just a workspace, it's a dynamic hub that supports their vast U.S. operations, serving over 60 airlines at 26 airports nationwide. The headquarters also includes their renowned "Training Centre of Excellence," underscoring Lake Nona's vital role in Orlando's burgeoning aerropolis.

NUVIEW

NUVIEW, the trailblazers in Earth Observation (EO), is pioneering the world's first commercial LiDAR satellite constellation. Based in Lake Nona, this groundbreaking project promises to map our planet in unprecedented 3D detail, overcoming traditional challenges such as cloud cover and darkness. With plans to launch their satellites in the next 24 to 36 months, NUVIEW is not just mapping the Earth; they're charting the future. **LN.**



Lake Nona's prime positioning and unwavering focus on forward-thinking endeavors offer more than just appeal—it signals a shift toward change. Here, companies seeking a collaborative environment with access to world-class facilities and a skilled workforce don't simply establish themselves; they reach unprecedented elevations.

THIS PHOTO WAS GENERATED BY AI



MS² WHERE NEW IDEAS COME TO LIFE

A COLLABORATIVE ENVIRONMENT DESIGNED FOR ENTREPRENEURS

Home to the Verizon 5G Innovation Hub, leAD Lake Nona Sports & Health Tech Accelerator program, Orlando Magic Gaming and more, the Pixon MS² Innovation Space was planned so health and tech startups and partners can conceive, test and implement their ideas equipped with the latest technology in a stimulating and engaging environment.

"We designed and built the space with as few fixed elements as possible," said Juan Santos, Senior Vice President of Brand Experience and Innovation at Tavistock Development Company. "The space is meant to be shared and flexible so that the configuration can change over time as innovations and occupants come and go."

But, some of the space's coolest features are the ones you can't see like the advanced Wi-Fi with location-based services and access to exclusive indoor Verizon 5G wireless technology. Combined, those emerging technologies can support new innovations that track human movement, power augmented reality, and more.

Featuring an open floor plan, the sharp, industrial space showcases shiny concrete floors accentuated with adjustable furniture and highlighted with bright pops of original artwork. Shared spaces include the main working area with roughly 40 workstations, a large conference room, two smaller team rooms and two quiet rooms. Startups will have access to 3D printers and flexible power accessibility wherever they are in the lab. Pixon MS² Innovation Space is also one of Lake Nona's first spaces to feature View Smart Windows that predictively tint to outdoor conditions.

"What's unique about the MS² is that it truly extends outside the building and into Lake Nona's living lab community," said Santos.

In addition to the MS², startups in the accelerator program can test their innovations in real life. Its location in Lake Nona Town Center was an intentional addition to Pixon's mixed-use environment.

Originally intended to accommodate a drive-through, the now boasts two garage door entrances allowing startups to bring large projects in and out with ease.

Santos says, "Mixed-use often means residential and retail, but at Pixon it means a collection of collaborative spaces designed to enhance wellbeing and innovation."

Custom art flows throughout MS² with designs inspired by its intended use – innovation at the intersection of technology and human performance – and the equation for acceleration, MS² (meters per second squared).

Pixon is truly a mixed-use project with apartments, a coffee shop that flows into a vibrant, accessible lobby, local restaurants, boutique fitness studios and now a collaborative innovation space.

MS² is just one example of Lake Nona's commitment to building an ecosystem of innovation and technology that thrives on collaboration and we're excited to see what new health and technology breakthroughs this space will facilitate. **LN.**



SHAPING TOMORROW'S FUTURE TODAY



LAKE NONA'S PIONEERING SPIRIT IN INNOVATION AND GLOBAL LEADERSHIP

Lake Nona is the ultimate destination for those passionate about progress and innovation. As a landmark of inspiration, it's no surprise that Lake Nona is the ideal location for those global thought leaders and pioneers who are determined to shape the future.

This commitment to pioneering thought and collaboration is showcased in two hallmark events: our very own Lake Nona Impact Forum and last year's Techonomy 23 Conference. These are not just meetings but powerful catalysts, embodying the very essence of Lake Nona's dedication to groundbreaking ideas and the synergy of collective innovation.

The Lake Nona Impact Forum, renowned for bringing together influential minds, provides a platform where healthcare, technology and public policy experts intersect to discuss and develop concepts that could shape our future. A guest at the forum described it as "an incredible confluence of forward-thinking and innovation."

When luminaries like Deepak Chopra join forces with other celebrated minds such as Dr. Sanjay Gupta, Nobel Laureate Elizabeth Blackburn, and President Bill Clinton at the Lake Nona Impact Forum, it's not just an event—it's a conversation. The lineup turns the forum into a vibrant showcase of ideas and innovation. Their collective presence does more than just raise the forum's profile; it injects a powerful blend of expertise and vision, setting the stage for engaging discussions and breakthrough insights.

In 2023, Lake Nona partnered with Worth Media Group for the Techonomy 23 Conference at Lake Nona Wave Hotel. This marked a transition from Silicon Valley to Lake Nona, a hub of cutting-edge living. Focused on 'The Promise and Peril of AI,' the conference featured more than 30 speakers, including Kerry Washington and Andrew Yang, exploring the possibilities of artificial intelligence in various sectors. The participation of Central Florida and Florida-based leaders from organizations such as KPMG and GuideWell underscored Lake Nona's role in the tech revolution.

Juan Santos, Senior Vice President of Brand Experience and Innovation at Tavistock Development Company, shared his thoughts on the unique energy of Lake Nona: "Every event here transcends the ordinary, sparking a vibrancy and creativity that's palpable. It's a place where ideas flourish and connections are made, reflecting the innovative spirit of our community."

By hosting events like the Lake Nona Impact Forum and Techonomy 23, Lake Nona has solidified its status as a vibrant, forward-looking community and affirmed its role in driving global conversations on technological progress and innovation-led economic growth. Lake Nona is not just keeping pace with the future but actively shaping it, making it an ideal location for technological and community development. **LN.**



Inspire.



Innovate.



Lake Nona Inspired

Drink Recipes brought to you by AI

Electric Elixir

A Cocktail Recipe inspired by Technology

1 1/2 oz. Vodka
1/2 oz. Blue Curacao
1/2 oz. Lime Juice
1/2 oz. Simple Syrup
1 oz. Club Soda
Edible Silver or Metallic Dust for garnish
Ice cubes

Instructions:

Fill a cocktail shaker with ice cubes. Add vodka, Blue Curacao, lime juice, and simple syrup to the shaker.

Shake the ingredients well until chilled.

Strain the mixture into a chilled cup or martini glass.

Top it off with club soda for a fizzy effect. Garnish by sprinkling edible silver or metallic dust on top for a futuristic shimmer.

Optionally, you can add a glow stick or LED ice cube for an extra tech-inspired touch. This cocktail presents a vibrant blue color resembling neon lights, while the sparkling effect from the metallic dust creates an otherworldly, futuristic appearance, perfect for a tech-inspired drink.

Enjoy responsibly!

Wellbeing Mocktail

Inspired by Lake Nona's Health & Wellbeing

3 oz. Coconut Water
2 oz. Pineapple Juice
1 oz. Blueberry Syrup or Blueberry Puree
1/2 oz. Fresh Lime Juice
Fresh Blueberries and a slice of Lime for garnish
Ice cubes

Instructions:

In a cocktail shaker or mixing glass, combine the coconut water, pineapple juice, blueberry syrup or puree, and fresh lime juice.

Add ice cubes to the shaker and shake well to chill the mixture.

Strain the mocktail into a tall glass filled with ice cubes.

Garnish by skewering a few fresh blueberries and placing them on the rim of the glass. Add a slice of lime to the rim or as a float in the drink for an extra touch.

This mocktail represents the calming essence of Lake Nona with its refreshing blend of coconut and pineapple, while the blueberry adds a touch of sweetness and a beautiful hue reminiscent of the blue skies and waters found in the area.

Enjoy this tranquil oasis-inspired drink!

Sparkling Citrus Refresher

Perfect for a Lake Nona Weekend

1 cup Sparkling Water
1/4 cup Fresh Orange Juice
1/4 cup Fresh Lemon Juice
1-2 tablespoons Simple Syrup
Slices of Orange and Lemon for garnish
Ice cubes

Instructions:

Fill a glass with ice cubes. Pour in the fresh orange juice and fresh lemon juice.

Add simple syrup according to your desired sweetness level.

Top it off with sparkling water and gently stir to combine.

Optionally, garnish the drink with slices of orange or lemon.

This drink is quick to make and offers a zesty and effervescent flavor, perfect for a refreshing pick-me-up any time of the day. Adjust the sweetness by adding more or less simple syrup to suit your taste preferences.

Enjoy your Sparkling Citrus Refresher!

Orlando Whiskey Sunset

Orlando Inspired

2 oz. Bourbon or Rye Whiskey
1/2 oz. Honey Syrup (equal parts honey and warm water, mixed)
2-3 dashes Angostura Bitters
1 Luxardo Maraschino Cherry for garnish
Ice cubes

Instructions:

In a mixing glass or shaker, combine the whiskey, honey syrup, and dashes of Angostura Bitters.

Add ice to the mixing glass and stir gently until well-chilled (about 30 seconds). Strain the mixture into a rocks glass filled with ice cubes.

Garnish with a Luxardo Maraschino Cherry.

This cocktail, the "Orlando Sunset," pays homage to the warm and relaxing evenings in Orlando. The use of honey adds sweetness and depth to the whiskey without relying on citrus elements. The Luxardo Maraschino Cherry garnish complements the drink while offering a subtle fruit note.

Enjoy this whiskey-based cocktail inspired by Orlando!



LN. Lake Nona Info Center

Located in Canvas Restaurant and Market

13615 Sachs Avenue, Orlando, FL 32827

Sign up for our newsletter:
The Weekly



lakenona.com/contact





learn more



**Lake Nona Information Center
Located inside
Canvas Restaurant
and Market at:**

**13615 Sachs Avenue
Orlando, FL 32827
E-mail: info@lakenona.com
Phone: 407.888.6500**

*let's be
friends*



@LearnLakeNona